

# ICD-10-CM is coming Be Ready!

---

REBECCA H WARTMAN OD

HARVEY RICHMAN OD FAAO FCOVD

AUGUST 2015

NORTH CAROLINA STATE OPTOMETRIC SOCIETY

# Disclaimers for Presentation

---

1. All information was current at time it was prepared
2. Drawn from national policies, with links included in the presentation for your use
3. Prepared as a tool to assist doctors and staff and is not intended to grant rights or impose obligations
4. Prepared and presented carefully to ensure the information is accurate, current and relevant

# Disclaimers for Presentation

---

5. The ultimate responsibility for the correct submission of claims and compliance with provider contracts lies with the provider of services
6. AOA, AOA-TPC, NCSOS, its presenters, agents, and staff make no representation, warranty, or guarantee that this presentation and/or its contents are error-free and will bear no responsibility or liability for the results or consequences of the information contained herein
7. Conflicts: Neither Harvey or Rebecca have financial support but RHW is a paid consultant to Eye Care Center OD PA

# What we will cover today

---

Overview of ICD-10-CM: Why and How

How to prepare

ICD-CM-Coding System Overview

- Alphabetical Indexes
- Tabular Index

ICD-10-CM Code Details and Nomenclature

ICD-10-CM Coding Examples

Summary and Resources

Questions

**Hank is obviously excited about ICD-10-CM!  
Is this the way YOU feel??**



**But Hank WILL succeed! And so will you!**



# ICD-10-CM Conversion

---

## **September 30, 2015**

- All encounter on or before this date
  - ICD-9-CM codes
- Even for Refiling, appeals etc

## **October 1, 2015**

- All encounters on or after this date
  - ICD-10-CM codes

# July 6, 2015: Breaking News AMA Announces Agreement with CMS

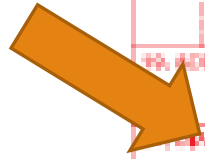
**For first year of ICD-10-CM, CMS and Recovery Audit Contractors will abide by the following:**

1. Will not deny claims solely based on diagnosis specificity if code used is from appropriate ICD-10 code family  
→ will not deny for unintentional errors
2. Will not subject physicians to penalties for PQRS, value-based payment modifier or meaningful use if code used is from appropriate ICD-10 code family
3. No penalties will not be applied if CMS experiences difficulties calculating quality scores for these programs due ICD-10 implementation
4. Will authorize advance payments to physicians if contractors are unable to process claims due to ICD-10 problems
5. Will establish communication center to monitor and resolve issues quickly, including an “ICD-10 ombudsman” to triaging physician issues

<http://www.ama-assn.org/ama/ama-wire/post/cms-icd-10-transition-less-disruptive-physicians>



# CMS 1500 Form 02/12 Version - 12 diagnosis places



14. DATE OF CURRENT ILLNESS, INJURY, or PREGNANCY (EMP) QUAL.				15. OTHER DATE (EMP) MM DD YY			16. DATES PATIENT UNABLE TO WORK IN CURRENT OCCUPATION FROM MM DD YY TO MM DD YY								
17. NAME OF REFERRING PHYSICIAN OR OTHER SOURCE				17a. TTE. NPI			18. HOSPITAL LOCATION DATES RELATED TO CURRENT SERVICE FROM MM DD YY TO MM DD YY								
19. ADDITIONAL CLAIM INFORMATION (Designated by NUCC)				19a. ICD-9-CM			19. OUTSIDE LAB? <input type="checkbox"/> YES <input type="checkbox"/> NO \$ CHARGES								
20. CONDITIONS OR NATURE OF ILLNESS OR INJURY (Specify ICD-9-CM to service line below) (11)				20. ICD-9-CM			20. ICD-9-CM			20. ORIGINAL REF. NO.					
A. _____		B. _____		C. _____		D. _____		21. PRIORITY AUTHORIZATION NUMBER							
E. _____		F. _____		G. _____		H. _____									
I. _____		J. _____		K. _____		L. _____									
24. A. DATE(S) OF SERVICE From MM DD YY To MM DD YY		B. PLACE OF SERVICE (ICD-9-CM)		C. PROCEDURES, SERVICES, OR SUPPLIES (Specify Usual Circumstances) OPTICPCS MOOPER		E. DIAGNOSIS (ICD-9-CM)		F. \$ CHARGES		G. CODE ON BILL		H. ICD-9-CM		I. REFERRING PHYSICIAN #	
26. PROVIDER TAX ID NUMBER (SSN) SSN		26. PATIENT'S ACCOUNT NO.		27. ACCEPT ASSIGNMENT TO THIS BILL (YES/NO)		28. TOTAL CHARGE \$		28. AMOUNT PAID \$		28. PAID BY NUCC USE					
29. SIGNATURE OF PHYSICIAN OR SUPPLIER INCLUDING DEGREE OR CREDENTIALS (Specify that the statements on the reverse apply to this bill and are made a part thereof)				30. SERVICE FACILITY LOCATION INFORMATION				31. BILLING PROVIDER INFO & PII# ( )							
32. DATE				32. NPI				32. NPI							

PHYSICIAN OR SUPPLIER INFORMATION

# CMS 1500 02/12 Changes

Box 21

21. DIAGNOSIS OR NATURE OF ILLNESS OR INJURY Relate A-L to service line below (24E)				ICD Ind.
A. _____	B. _____	C. _____	D. _____	
E. _____	F. _____	G. _____	H. _____	
I. _____	J. _____	K. _____	L. _____	

- Added “ICD Ind.” and two dotted lines to accommodate a 1-byte indicator
  - Indicators provided in the 02/12 Instruction Manual
- Added 8 additional lines for diagnosis codes
- Changed labels of the diagnosis code lines to alpha characters (A – L)
- Removed the period within the diagnosis code lines
  - 9 ICD-9-CM
  - 0 ICD-10-CM



Enter the indicator between the vertical, dotted lines in the upper right-hand portion of the field.

# CMS 1500 02/12 Changes

---

Diagnosis codes without decimal points

Example Acute atopic conjunctivitis

372.14		37214	ICD-9-CM
H10.13		H1013	ICD-10-CM

Note: Can ONLY link 4 diagnoses codes to any examination or procedure line!!

But can list up to 12 diagnoses per claim!

# Overview of ICD-10-CM

1st

- ICD-10-CM/PCS
- (International Classification of Diseases, 10th Edition, Clinical Modification /Procedure Coding System)

2nd

- **ICD-10-CM** for diagnosis coding
- ICD-10-PCS for inpatient procedure coding (Hospitals only)

3rd

- ICD-10-CM replaces ICD-9-CM
- Does not change use of CPT® in any way

# Why change ICD-9-CM ICD-10-CM?

ICD-9-CM is 30 years old

- Produces limited data about medical conditions
- Uses outdated terms
- Is inconsistent with current medical practice
- Structure limits number of new codes
- Many ICD-9 categories are full

ICD-10-CM everywhere since 1994 (except the US and Italy)  
Published by World Health Organization (WHO)

US Version maintained by Centers for Disease Control (CDC)

# ICD-10-CM Improvements

**Harmonizes with other classifications**

**Removes relationships with procedure codes**

**Revises diabetes codes - consistent with ADA**

**Information on diseases and conditions and causes grouped as follows:**

- Communicable diseases
- General diseases that affect the whole body
- Local diseases arranged by site
- Developmental diseases
- Injuries
- External causes

# Revised Timeline for Change Preparation

## Planning

Jan-Feb 2014

- Identify resources – Create project team – Assess effects
- Create project plan - Secure budget

## Communications

Jan 2014- June 2015

- Inform staff – Contact vendors/ payers Jan-Feb 2014
- Monitor vendor prep March-Dec 2014
- Monitor payer prep March 2014– June 2015

## Testing

April 2014-Sept 2015

- Level 1: internal April- Dec 2014
- Level 2: external Oct 2014 – Sept 2015

## Comprehensive Training

April 2014+

- Documentation April 2014 and beyond
- Coding April 2014 and beyond

# Review your use of ICD-9-CM

## Develop/Review Your Current ICD-9-CM Uses List

- Authorizations/pre-certifications
- Medical records
- Superbills/Encounter forms
- Practice management and billing systems
- Coding manuals
- Etc



# Improve Clinical Documentation



- Review current documentation habits



- Is documentation specific and detailed

**ICD-10-CM will not affect the way you provide care but gives more specific diagnosis choices**

# Specifics of Documentation

---

## SITE

Cornea

Conjunctiva

Retina

Etc

## LATERALITY

Right eye

Left Eye

## LOCATION

Central

Peripheral

Macular

Etc

# Specifics of Documentation

## IF INJURY

**External cause**

HOW?

**Place of occurrence**

WHERE?

home, work, in car, etc

**Activity code**

WHAT?

sports, using tool, etc

**External cause status**

work, military, home etc

## IF INFECTION

Organism ?

Related to?

- Surgery , injury etc

Sometimes coded BUT NOT ALWAYS

Must read specifics for each condition

## IF SYSTEMIC

Type of disease

Body system(s) affected

Complication or manifestation

Type 2 DM → long-term insulin use

# US Version of ICD-10-CM NOT WHO Version

---

ICD-10-CM owned by World Health Organization

**BUT for United States –**

ICD-10-CM code set – maintained by the National Center for Health Statistics (NCHS) of the Centers for Disease Control and Prevention (CDC) for use in the United States

Thus some different rules will apply for US vs World Health Organization versions of code set

[www.cdc.gov/nchs/icd/icd10cm.htm](http://www.cdc.gov/nchs/icd/icd10cm.htm)

# ICD-9-CM vs ICD-10-CM

## ICD-9-CM

## ICD-10-CM

ICD-9-CM= 13,000 codes

ICD-10-CM =68,000 +

3-5 characters

3 -7 characters

Character 1= # or alpha (V,E)

Character 1= alpha (except U)

Character 2-5= #

Character 2 =#

Characters 3-7=alpha or #

Decimal after 3 characters

Alpha characters not case-sensitive

ICD-10:Dummy placeholder “x” used when need 7<sup>th</sup> character

# ICD-10-CM

**Determine** conditions for coding from medical documentation following ICD rules

**Use Alphabetical Index** to locate condition and allocate code

**Use Tabular Listing** to review all coding instructions related to code (e.g. inclusion, exclusion)

**Use Instruction Manual** for any rules regarding selection for reporting mortality/morbidity

# Overview of ICD-10-CM Alphabetical Index

---

This is where you begin!

Can make errors if you do not start here!

Alphabetical list of codes from the Tabular List

Alphabetical list of terms and corresponding code

1. Index of Diseases and Injury
2. Index of External Causes of Injury
3. Table of Neoplasms
4. Table of Drugs and Chemicals

# Overview of ICD-10-CM Alphabetical Index

---

## Helpful Hint

- Syndromes under “syndrome” listing
  - Dry eye syndrome
    - Not under corneal
    - Not under lacrimal
    - Not under ocular
    - UNDER SYNDROME
- Dysfunctions under “dysfunctions” listing
- Degenerations under “degeneration” listing
  - Macular degeneration
    - Not under retinal
    - Not under macula
    - UNDER DEGENERATION



# ICD-10-CM Terminology and Conventions

## Alphabetic Index Example

---

### Macula

- cornea, corneal — *see Opacity, cornea*
- degeneration (atrophic) (exudative) (senile) — *see also Degeneration, macula*
- - hereditary — *see Dystrophy, retina*



### Degeneration, degenerative

- macula, macular (acquired) (age-related) (senile) H35.30
- - angioid streaks H35.33
- - atrophic age-related H35.31
- - congenital or hereditary — *see Dystrophy, retina*
- - cystoid H35.35-
- - drusen H35.36-
- - exudative H35.32
- - hole H35.34-
- - nonexudative H35.31
- - puckering H35.37-
- - toxic H35.38-



# ICD-10-CM Terminology and Conventions

## Tabular List

Tabular list → chapters ► body system/condition

---

Divided into categories, subcategories and codes Can **ONLY** report codes

### Categories-3 characters

- If has no further subdivision is equivalent to code

### Subcategories - 4 or 5 characters

- Each level of subdivision after a category is a subcategory
- If no further subdivision is equivalent to a code

### Codes- 3, 4, 5, 6 or 7 characters

- Final level of subdivision
- If 7th character is required invalid without 7th character
- If placeholder needed-X used for code to be valid code

# ICD-10-CM Terminology and Conventions

## Tabular List

H35 Other Retinal Disorders

Category

H35.3 Degeneration of macula and posterior pole

H35.30 Unspecified macular degeneration

Age-related macular degeneration

H35.31 Nonexudative age-related macular degeneration

Atrophic age-related macular degeneration

H35.32 Exudative age-related macular degeneration

H35.33 Angioid streaks of macula

H35.34 Macular cyst, hole, or pseudohole

H35.341 ..... right eye

H35.342 ..... left eye

H35.343 ..... bilateral

H35.349 ..... unspecified eye

Subcategory that is  
Code

Subcategory NOT  
a code

These are final  
codes

# ICD-10-CM Terminology and Conventions

## 7th Characters

Certain ICD-10-CM categories need 7th character



When 7th character is required → used for all codes within category or as noted in Tabular List instructions



The 7th character must be 7th character in data field




If code requires 7th character but is not 6 characters long THEN must use placeholder X to fill in empty characters

# ICD-10-CM Terminology and Conventions

## Punctuation

---

### [ ] Brackets

- Alphabetic Index: identify manifestation codes 
- Tabular List: enclose synonyms, alternative wording or explanatory phrases

### ( ) Parentheses

- Alphabetic Index and Tabular List :  
enclose supplementary words that may or may not be present in statement of disease or procedure without affecting code number assignment

### : Colons

- Tabular List: after incomplete term which needs one or more of modifiers following colon to make it assignable to a category

# Alphabetic Index: Disorders of the Retina H33

**Retinochoroiditis** —see also *Inflammation, chorioretinal*

- disseminated —see *Inflammation, chorioretinal, disseminated*

- - syphilitic A52.71

---

- focal —see *Inflammation, chorioretinal*

- juxtapapillaris —see *Inflammation, chorioretinal, focal, juxtapapillary ...*

**Retinopathy (background) H35.00**

- arteriosclerotic I70.8 [H35.0-]

- atherosclerotic I70.8 [H35.0-]

- central serous —see *Chorioretinopathy, central serous*

- Coats H35.02-

- diabetic —see *Diabetes, retinopathy*

- exudative H35.02-

- hypertensive H35.03- ...

**Retinoschisis H33.10-**

- congenital Q14.1

- specified type NEC H33.19-

Carefully note sections and codes in [ ]

**For Alphabetic Index**

**Both conditions are listed together**

**Etiology first then manifestation codes [ ]**

**Code in brackets always coded second**

**BUT sometimes NOT noted in Alphabetical Index!!**

# ICD-10-CM Terminology and Conventions

## Includes Notes

---

**Includes Notes:** immediately under three character code title  
further define or give examples of category content

**Inclusion terms** are list of terms included under some codes

Defines when code is to be used

May be synonyms of the code title

For “other specified” codes is list of various conditions assigned to code

**BUT** not necessarily exhaustive

Additional terms found only in the Alphabetic Index may also be assigned to a code

# ICD-10-CM Terminology and Conventions

## Excludes Notes

---

### Excludes1

Pure excludes note– meaning “NOT CODED HERE!”

Excluded code should never be used at same time as code above Excludes1 note

Used when two conditions cannot occur together

(Example: congenital versus acquired form of same condition)

### Excludes2

Means “Not included here”

Excluded condition is not part of condition represented by code,

BUT patient may have both conditions at the same time

Excludes2 code acceptable to use when both the code and excluded code occur together



# ICD-10-CM Terminology and Conventions

## Examples

---

### H53 Visual disturbances

#### H53.0 Amblyopia ex anopsia

Excludes1: amblyopia due to vitamin A deficiency (E50.5)

← Excludes 1 note

H53.00 Unspecified amblyopia

#### H11.1 Conjunctival degenerations and deposits

Excludes2: pterygium (H11.81)

← Excludes 2 note

H11.10 Unspecified conjunctival degenerations

H11.11 Conjunctival deposits

# ICD-10-CM Sequencing Order

## Tabular Notes

---

### “In diseases classified elsewhere” codes:

- Never permitted to be used as first-listed diagnosis code
- Must be used with underlying condition code
- Must be listed following the underlying condition

But some manifestation codes do not have “in diseases classified elsewhere” in title

- “use additional code” note for the etiology code
- “code first” note at the manifestation code
- Rules for sequencing apply→  
    etiology code then manifestation code

# ICD-10-CM Terminology and Conventions

## Other Nomenclature

---

### “Code also” note

Instructs that two codes may be required to fully describe condition, but this note does not provide sequencing direction

### Default codes

Listed next to a main term in Alphabetic Index

The default code represents condition most commonly associated with main term or is the unspecified code for the condition

If condition is documented in medical record (for example, appendicitis) without any additional information, such as acute or chronic, the default code should be assigned

# ICD-10-CM and Electronic Medical Records

---

Your success rate for properly billing ICD-10-CM will depend on your properly selecting the impressions and proper laterality in your electronic medical record program

Typically your ICD-10-CM code choices will be a one-to-one correlation with your choices for ICD-9-CM within your electronic medical record program.

# ICD-10-CM and Electronic Medical Records

---

If the code you need is due to drug or chemical interactions, any underlying condition or certain atypical diabetes, such as secondary or gestational, then you will need to ensure the code choice is proper and correct. And, again, remember to choose the proper laterality to obtain the most specific codes.

You need to be aware of the correct includes and Excludes1 and Excludes2 Notes to further ensure the correct code(s) have been chosen within your electronic medical records.

# Tabular Index Chapter VII Categories

H00–H05 → Disorders of eyelid, lacrimal system, orbit

H10–H11 → Disorders of conjunctiva

---

H15–H22 → Disorders of sclera, cornea, iris, ciliary body

H25–H28 → Disorders of lens

H30–H36 → Disorders of choroid and retina

H40–H42 → Glaucoma

H43–H44 → Disorders of vitreous body and globe

H46–H47 → Disorders of optic nerve & visual pathways

H49–H52 → Disorders of ocular muscles, binocular movement, accommodation and refraction

H53–H54 → Visual disturbances and blindness

H55–H57 → Other disorders of eye and adnexa

H 59 → Intraoperative and postprocedural complications and disorders

# Chapter VII Diseases of the eye and adnexa (H00–H59) Notes and Exclusions

**Note:** Use an external cause code following the code for the eye condition, if applicable, to identify the cause of the eye condition

---

## Excludes2:

Certain conditions originating in the perinatal period (P04–P96)

Certain infectious and parasitic diseases (A00–B99) ←

Complications of pregnancy, childbirth and the puerperium (O00–O9A) ←

Congenital malformations, deformations, and chromosomal abnormalities (Q00–Q99)

Diabetes mellitus related eye conditions (E09.3–, E10.3–, E11.3–, E13.3–)

Endocrine, nutritional and metabolic diseases (E00–E88) ←

Injury (trauma) of eye and orbit (S05.–) ←

Injury, poisoning and certain other consequences of external causes (S00–T88)

Neoplasms (C00–D49) ←

Symptoms, signs and abnormal clinical and laboratory findings, not elsewhere classified (R00–R94)

Syphilis related eye disorders (A50.01, A50.3–, A51.43, A52.71)

# Refractive Diagnoses

## Alphabetic Index

### **Astigmatism (compound) (congenital) H52.20-**

---

- irregular H52.21-
- regular H52.22-

### **Hypermetropia (congenital) H52.0-**

### **Myopia (axial) (congenital) H52.1-**

- degenerative (malignant) H44.2-
- malignant H44.2-
- pernicious H44.2-
- progressive high (degenerative) H44.2-

### **Presbyopia H52.4**



# Refractive Diagnoses Tabular Listing

H49-H52 [Disorders of ocular muscles, binocular movement, accommodation and refraction](#)

---

## H52 Disorders of refraction and accommodation

### H52.0 Hypermetropia

#### H52.00 Hypermetropia, unspecified eye

H52.01 Hypermetropia, right eye

H52.02 Hypermetropia, left eye

H52.03 Hypermetropia, bilateral

### H52.1 Myopia

Excludes1: degenerative myopia (H44.2-)

H52.10 Myopia, unspecified eye

H52.11 Myopia, right eye

H52.12 Myopia, left eye

H52.13 Myopia, bilateral

### H52.4 Presbyopia



Myopia and hyperopia OD OS or OU  
Presbyopia Not per eye H52.4

# Refractive Diagnoses Tabular Listing

## H52.2 Astigmatism

### H52.20 Unspecified astigmatism

H52.201 Unspecified astigmatism, right eye

H52.202 Unspecified astigmatism, left eye

H52.203 Unspecified astigmatism, bilateral

H52.209 Unspecified astigmatism, unspecified eye

### H52.21 Irregular astigmatism

H52.211 Irregular astigmatism, right eye

H52.212 Irregular astigmatism, left eye

H52.213 Irregular astigmatism, bilateral

H52.219 Irregular astigmatism, unspecified eye

### H52.22 Regular astigmatism

H52.221 Regular astigmatism, right eye

H52.222 Regular astigmatism, left eye

H52.223 Regular astigmatism, bilateral

H52.229 Regular astigmatism, unspecified eye

Astigmatism is more complicated

# Alphabetical Index: External Hordeolum (373.11)

- Eye, eyeball, eyelid —*see condition*
  - Sty, stye (external) (internal) (meibomian) (zeisian) —*see Hordeolum*
  - **Hordeolum (eyelid) (externum) (recurrent) H00.019**
- 

-internum H00.029

--left H00.026

---lower H00.025

---upper H00.024

--right H00.023

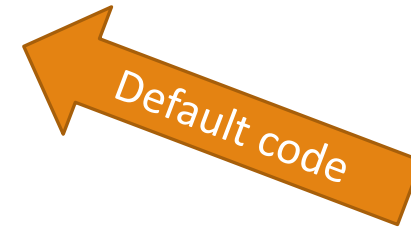
---lower H00.022

---right H00.021

- left H00.016

- - lower H00.015

- - upper H00.014 . . .



# Tabular List: Hordeolum, External H00.01 (373.11)

## H00 Hordeolum and chalazion

### H00.0 Hordeolum (externum) (internum) of eyelid

H00.01 Hordeolum externum  
Hordeolum NOS  
Stye

H00.011 Hordeolum externum right upper eyelid

H00.012 Hordeolum externum right lower eyelid

H00.013 Hordeolum externum right eye, unspecified eyelid

H00.014 Hordeolum externum left upper eyelid

H00.015 Hordeolum externum left lower eyelid

H00.016 Hordeolum externum left eye, unspecified eyelid

H00.019 Hordeolum externum unspecified eye, unspecified eyelid

H00.02 Hordeolum internum  
Infection of meibomian gland

Code to specific eye and eyelid when possible  
and appropriate per Tabular Listing

# Alphabetical Index: Blepharitis 373.00

Blepharitis (angularis) (ciliaris) (eyelid) (marginal) (nonulcerative) H01.009

- herpes zoster B02.39

- left H01.006

-- lower H01.005

-- upper H01.004

- right H01.003

-- lower H01.002

-- upper H01.001

- squamous H01.029

-- left H01.026

--- lower H01.025

--- upper H01.024

-- right H01.023

--- lower H01.022

--- upper H01.021

- ulcerative H01.019

-- left H01.016

--- lower H01.015

--- upper H01.014

-- right H01.013

--- lower H01.012

--- upper H01.011

**Note: H zoster blepharitis is under different code set- B**

# Tabular List : Blepharitis H01.0 (373.00)

H01 Other inflammation of eyelid

H01.0 Blepharitis

Excludes1: blepharoconjunctivitis (H10.5-)

**Excludes1 Note!**

H01.00 Unspecified blepharitis

H01.001 Unspecified blepharitis right upper eyelid

H01.002 Unspecified blepharitis right lower eyelid

H01.003 Unspecified blepharitis right eye, unspecified eyelid

H01.004 Unspecified blepharitis left upper eyelid

H01.005 Unspecified blepharitis left lower eyelid

H01.006 Unspecified blepharitis left eye, unspecified eyelid

H01.009 Unspecified blepharitis unspecified eye, unspecified eyelid

**REMEMBER: Blepharitis has two other categories:  
Ulcerative H01.01 and Squamous H01.02**

# Other Things to Notice in Eyelid Section

Trichiasis is separate section for trichiasis without entropion as opposed to entropion –broken into unspecified, cicatricial, mechanical, senile and spastic

## **H02.0 Entropion and trichiasis of eyelid**

H02.05 Trichiasis without entropion

H02.051 Trichiasis without entropion right upper eyelid

H02.052 Trichiasis without entropion right lower eyelid

H02.053 Trichiasis without entropion right eye, unspecified eyelid

H02.054 Trichiasis without entropion left upper eyelid

H02.055 Trichiasis without entropion left lower eyelid

H02.056 Trichiasis without entropion left eye, unspecified eyelid

H02.059 Trichiasis without entropion unspecified eye, unspecified eyelid

Entropion is spelled entropion in this particular entry of CDC official version

# Disorders of conjunctiva (H10 – H11)

H10.0 Mucopurulent conjunctivitis

H10.1 Acute Atopic conjunctivitis

H10.2 Other acute conjunctivitis

H10.3 Unspecified acute conjunctivitis

H10.4 Chronic conjunctivitis

H10.5 Blepharoconjunctivitis

H10.8 Other conjunctivitis

H11.0 Pterygium of eye

H11.1 Conjunctival degenerations and deposits

H11.2 Conjunctival scars

H11.3 Conjunctival hemorrhage

H11.4 other conjunctival vascular disorders and cysts

H11.8 Other specified disorders of conjunctiva

H11.9 Unspecified disorder of conjunctiva

**Each of these subcategories are further divided into right eye, left eye, bilateral or unspecified eye codes**



# Disorders of Conjunctiva Exclusions–H10

## H10 Conjunctivitis

**Excludes1:** keratoconjunctivitis (H16.2-)

### H10.21

Acute toxic conjunctivitis

Acute chemical conjunctivitis

**Code first** (T51-T65) to identify chemical and intent

**Excludes1:** burn and corrosion of eye and adnexa (T26.-)

**Code First Note**

### H10.3 Unspecified acute conjunctivitis

**Excludes1:** ophthalmia neonatorum NOS (P39.1)

**Important to note all Excludes1 Notes**

### H10.44 Vernal conjunctivitis

**Excludes1:** vernal keratoconjunctivitis with limbar and corneal involvement (H16.26-)

### H10.81 Pingueculitis

**Excludes1:** pinguecula (H11.15-)

# Disorders of Conjunctiva Exclusions–H1 1

**H11** Other disorders of conjunctiva

**Excludes1:** keratoconjunctivitis (H16.2-)

---

**H 11.0** Pterygium of eye

**Excludes1:** pseudopterygium (H11.81-)

**H11.1** Conjunctival degenerations and deposits

**Excludes2:** pseudopterygium (H11.81)

**Excludes2 Note**

**H11.14** Conjunctival xerosis, unspecified

**Excludes1:** xerosis of conjunctiva due to vitamin A deficiency (E50.0, E50.1)

**H11.15** Pinguecula

**Excludes1:** pingueculitis (H10.81-)

# Alphabetical Index: Conjunctivitis (372.01, 372.05, 372.13, 372.14)

Conjunctivitis (staphylococcal) (streptococcal) NOS H10.9

- Acanthamoeba B60.12- acute H10.3-
- - atopic H10.1-
- - mucopurulent H10.02-
- - - follicular H10.01-
- - chemical (*see also Corrosion, cornea*) H10.21-
- - pseudomembranous H10.22-
- - serous except viral H10.23-
- - - viral —*see Conjunctivitis, viral*
- - toxic H10.21-
- adenoviral (acute) (follicular) B30.1
- allergic (acute) —*see Conjunctivitis, acute, atopic*
- chronic H10.45    **etc MANY MORE CODES UNDER CONJUNCTIVITIS**

Note “See also” so can follow but optional

Note the “See” so must go to this entry

# Tabular List

## Conjunctivitis, acute mucopurulent H10.02–

### Conjunctivitis H10

**Excludes1** keratoconjunctivitis (H16.2-)

---

H10.0 Mucopurulent conjunctivitis

H10.01 Acute follicular conjunctivitis

H10.011 Acute follicular conjunctivitis, right eye

H10.012 Acute follicular conjunctivitis left eye

H10.013 Acute follicular conjunctivitis bilateral

H10.019 Acute follicular conjunctivitis unspecified eye

H10.02 Other mucopurulent conjunctivitis

H10.021 Other mucopurulent conjunctivitis right eye

H10.022 Other mucopurulent conjunctivitis left eye

H10.023 Other mucopurulent conjunctivitis bilateral

H10.029 Other mucopurulent conjunctivitis unspecified eye

**“Run of the mill” bacterial conjunctivitis is typically under mucopurulent conjunctivitis  
Also simple, follicular, etc**

**Must specify eye when coding conjunctivitis  
Many other codes for conjunctivitis exist**

# Alphabetical Index

## Conjunctivitis, viral, adenovirus (372.01)

---

- serous except viral H10.23-
- viral —see Conjunctivitis, viral
- toxic H10.21-
- adenoviral (acute) (follicular) B30.1
- allergic (acute) —see Conjunctivitis, acute, atopic
- chronic H10.45
- vernal H10.44
- anaphylactic —see Conjunctivitis, acute, atopic
- Apollo B30.3
- atopic (acute) —see Conjunctivitis, acute, atopic

**Note:**  
Code not in H10 section But in B section  
**USE ALPHABETICAL INDEX TO LOOK UP CODES**

# Tabular List

## Conjunctivitis, viral, adenovirus B30.1

### **B30 Viral conjunctivitis**

---

**Excludes1:** herpesviral [herpes simplex] ocular disease (B00.5)  
ocular zoster (B02.3)

#### **B30.0 Keratoconjunctivitis due to adenovirus**

Epidemic keratoconjunctivitis

Shipyard eye

#### **B30.1 Conjunctivitis due to adenovirus**

Acute adenoviral follicular conjunctivitis

Swimming-pool conjunctivitis

#### **B30.2 Viral pharyngoconjunctivitis**

Note Excludes1 under heading  
Note specific code definition  
**NOT PER EYE HERE**

# Alphabetic Index: Dry Eye Syndrome (375.15)

**Dry, dryness** —*see also condition*

- larynx J38.7
- mouth R68.2
- - due to dehydration E86.0
- nose J34.89
- socket (teeth) M27.3
- throat J39.2

**NO DRY EYE LISTED**

**Keratoconjunctivitis H16.20-...**

- sicca (Sjogren's) M35.0-
- not Sjogren's H16.22-

**NO DRY EYE LISTED**

**Syndrome** —*see also Disease*

- dry eye H04.12-

**FINALLY find under “syndrome”**

# Tabular List: Dry Eye Syndrome (375.15;370.33)

## H04.12 Dry eye syndrome

---

Tear film insufficiency, NOS

H04.121 Dry eye syndrome of right lacrimal gland

H04.122 Dry eye syndrome of left lacrimal gland

H04.123 Dry eye syndrome of bilateral lacrimal glands

H04.129 Dry eye syndrome of unspecified lacrimal gland

**Note:**

**Dry eye is under lacrimal**

**Keratitis sicca is under keratitis**

## H16.22 Keratoconjunctivitis sicca, not specified as Sjögren's

Excludes1: Sjögren's syndrome (M35.01)

H16.221 Keratoconjunctivitis sicca, not specified as Sjögren's, right eye

H16.222 Keratoconjunctivitis sicca, not specified as Sjögren's, left eye

H16.223 Keratoconjunctivitis sicca, not specified as Sjögren's, bilateral

H16.229 Keratoconjunctivitis sicca, not specified as Sjögren's, unspecified eye



# Cataract, Nuclear Sclerotic (366.16)

## Alphabetic Index

**Cataract** (cortical) (immature) (incipient) H26.9

- with

- - neovascularization —see Cataract, complicated

- age-related —see Cataract, senile

- anterior

- - and posterior axial embryonal Q12.0

- - pyramidal Q12.0

- associated with

- - galactosemia E74.21 [H28]

- - myotonic disorders G71.19 [H28]

- nuclear

- - embryonal Q12.0

- - sclerosis —see Cataract, senile, nuclear

- senile H25.9

- - nuclear (sclerosis) H25.1-

- - polar subcapsular (anterior) (posterior) —see Cataract, senile, incipient

- - punctate —see Cataract, senile, incipient

Note descriptions in ( ) not for senile

“Age related” links to Cataract, senile

“Nuclear” directs to Cataract, senile, nuclear

Finally directed to proper subcategory

# Tabular List

## Cataract, nuclear sclerotic, senile H25.1

### Disorders of lens (H25-H28)

**H25 Age-related cataract**  
Senile cataract

Make sure you note heading excludes notes!

**Excludes2:** capsular glaucoma with pseudoexfoliation of lens (H40.1-)

**H25.1 Age-related nuclear cataract**  
Cataracta brunescens  
Nuclear sclerosis cataract

**H25.10 Age-related nuclear cataract, unspecified eye**

**H25.11 Age-related nuclear cataract, right eye**

**H25.12 Age-related nuclear cataract, left eye**

**H25.13 Age-related nuclear cataract, bilateral**

Note 5<sup>th</sup> and 6th digits – Sometimes 9 = unspecified, sometimes 0 = unspecified

# Alphabetical Index: Pseudophakia

---

## **Pseudoparalysis**

- arm or leg R29.818
- atonic, congenital P94.2

## **Pseudopelade L66.0**

## **Pseudophakia Z96.1**



## **Pseudopolyarthritides, rhizomelic M35.3**

## **Pseudopolycythemia D75.1**

## **Pseudopseudohypoparathyroidism E20.1**

# Tabular Listing: Pseudophakia

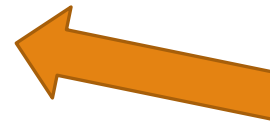
Found in Chapter 21:  
Factors Influencing Health Status and Contact

## Z96 Presence of other functional implants

**Excludes2:** complications of internal prosthetic devices, implants and grafts (T82-T85)  
fitting and adjustment of prosthetic and other devices (Z44-Z46)

### Z96.0 Presence of urogenital implants

Z96.1 Presence of intraocular lens  
Presence of pseudophakia



This one is **EASY!**

Could be difficult to find proper code if do not use Alphabetical Index first!!

# Disorders of choroid and retina (H30–H36)

---

**H30** Chorioretinal inflammation

**H31** Other disorders of choroid

**H32** Chorioretinal disorders in diseases classified elsewhere

**H33** Retinal detachments and breaks

**H34** Retinal vascular occlusions

**H35** Other retinal disorders

**H 36** Retinal disorders in diseases classified elsewhere

# Disorders of choroid and retina H32

## Entire Section

### H32 Chorioretinal disorders in diseases classified elsewhere

**Code first** underlying disease, such as:  
congenital toxoplasmosis (P37.1)  
histoplasmosis (B39.-)  
leprosy (A30.-)

**Excludes1:** chorioretinitis (in):

toxoplasmosis (acquired) (B58.01)  
tuberculosis (A18.53)



**Code First:** Must code the other disease before code the chorioretinal disorder  
**Excludes1** code means you cannot code these diagnoses together

# Chorioretinal Scar of Posterior Pole Example

## Alphabetic Index

**Scar, scarring (see also *Cicatrix*) L90.5**

---

- chorioretinal H31.00-
- - posterior pole macula H31.01- 
- - postsurgical H59.81-
- - solar retinopathy H31.02- 
- - specified type NEC H31.09-
- choroid —see *Scar, chorioretinal*

**Go to H31.01- or H 31.02- section of tabular listing  
Depends on cause of the scar**

# Chorioretinal Scar, Posterior Pole OD Example Tabular Index

## H31.01 Macula scars of posterior pole (postinflammatory) (post-traumatic)

**Excludes1:** postprocedural chorioretinal scar (H59.81-)



H31.011 Macula scars of posterior pole (postinflammatory) (post-traumatic), right eye

H31.012 Macula scars of posterior pole (postinflammatory) (post-traumatic), left eye

H31.013 Macula scars of posterior pole (postinflammatory) (post-traumatic), bilateral

H31.019 Macula scars of posterior pole (postinflammatory) (post-traumatic), unspecified eye

**Appropriate code is H31.011 if macular**

## H31.02 Solar retinopathy



H31.021 Solar retinopathy, right eye

H31.022 Solar retinopathy, left eye

H31.023 Solar retinopathy, bilateral

H31.029 Solar retinopathy, unspecified eye



**But could be H31.021 if known solar retinopathy scar**




# Toxoplasmosis Scarring of Choroid OS

## Alphabetic Index

**Chorioretinitis** —*see also Inflammation, chorioretinal*

- disseminated —*see also Inflammation, chorioretinal, disseminated...*
- focal —*see also Inflammation, chorioretinal, focal*
- histoplasmic B39.9 [H32] 
- in (due to)
  - - histoplasmosis B39.9 [H32]
  - - syphilis (secondary) A51.43
    - - - late A52.71
    - - - toxoplasmosis (acquired) B58.01 
    - - - congenital (active) P37.1 [H32]...

**Toxoplasma, toxoplasmosis (acquired) B58.9** 

- with
  - - hepatitis B58.1
  - - meningoencephalitis B58.2
  - - **ocular involvement B58.00** 
  - - other organ involvement B58.89
  - - pneumonia, pneumonitis B58.3
- congenital (acute) (subacute) (chronic) P37.1

**The section to review for toxoplasmosis  
ocular involvement-both references**

# Toxoplasmosis Scarring of Choroid OS

## Tabular Lookup

### B58 Toxoplasmosis

**Includes:** infection due to *Toxoplasma gondii*

**Excludes1:** congenital toxoplasmosis (P37.1)

#### B58.0 Toxoplasma oculopathy

**B58.00** Toxoplasma oculopathy, unspecified

**B58.01** Toxoplasma chorioretinitis

**B58.09** Other toxoplasma oculopathy  
Toxoplasma uveitis

### H32 Chorioretinal disorders in diseases classified elsewhere

**Code first** underlying disease, such as:  
congenital toxoplasmosis (P37.1)  
histoplasmosis (B39.-)  
leprosy (A30.-)

**Excludes1:** chorioretinitis (in):  
toxoplasmosis (acquired) (B58.01)  
tuberculosis (A18.53)



Toxoplasmosis scar of choroid code found here  
Not under H 30 or H31 sections  
**REMEMBER** Excludes1 note reviewed

Code would be B58.01  
**NOT PER EYE**

# Choroidal Nevus, Both eyes Example

## Alphabetical Index

---

### Nevus D22.9

- achromic —*see Neoplasm, skin, benign*
- amelanotic —*see Neoplasm, skin, benign*

...

- choroid D31.3-
- comedonicus Q82.5
- conjunctiva D31.0-



**Note: Choroidal & conjunctival nevus are NOT under H**

# Choroidal Nevus, Both eyes Example Tabular Listing

D10-D36 [Benign neoplasms, except benign neuroendocrine tumors](#)

---

## D31 Benign neoplasm of eye and adnexa

**Excludes1:** benign neoplasm of connective tissue of eyelid (D21.0)  
benign neoplasm of optic nerve (D33.3)  
benign neoplasm of skin of eyelid (D22.1-, D23.1-)

### D31.3 Benign neoplasm of choroid

D31.30 Benign neoplasm of unspecified choroid

D31.31 Benign neoplasm of right choroid ←

D31.32 Benign neoplasm of left choroid ←

**Note this code is per eye while some are NOT PER EYE  
NEED TO USE BOTH D31.31 AND D31.32**

# Alphabetic Index: Disorders of the Retina H33

**Retinochoroiditis** —see also *Inflammation, chorioretinal*

- disseminated —see *Inflammation, chorioretinal, disseminated*

- - syphilitic A52.71

---

- focal —see *Inflammation, chorioretinal*

- juxtapapillaris —see *Inflammation, chorioretinal, focal, juxtapapillary ...*

**Retinopathy (background) H35.00**

- arteriosclerotic I70.8 [H35.0-]

- atherosclerotic I70.8 [H35.0-]

- central serous —see *Chorioretinopathy, central serous*

- Coats H35.02-

- diabetic —see *Diabetes, retinopathy*

- exudative H35.02-

- hypertensive H35.03- ...

**Retinoschisis H33.10-**

- congenital Q14.1

- specified type NEC H33.19-

Carefully note sections and codes in [ ]

**For Alphabetic Index**

**Brackets NOT always used in alphabetic index...**

**Sometimes 2<sup>nd</sup> code indicated in Tabular Listing...**

# ICD-10-CM: HTN Retinopathy Sequencing Order > Tabular Notes

## H35 Other retinal disorders

Excludes2: diabetic retinal disorders (E08.311–E08.359, E09.311–E09.359, E10.311–E10.359, E11.311–E11.359, E13.311–E13.359)

### H35.0 Background retinopathy and retinal vascular changes

Code Also any associated hypertension (I10.–)

H35.00 Unspecified background retinopathy

·  
·  
·

H35.03 Hypertensive retinopathy

H35.031 Hypertensive retinopathy, right eye

H35.032 Hypertensive retinopathy, left eye

H35.033 Hypertensive retinopathy, bilateral

H35.039 Hypertensive retinopathy, unspecified eye

**Code Also tells you to code HTN first but not in Alphabetic Index**

# ICD-10-CM: HTN Retinopathy Sequencing Order Tabular Notes

I10 Essential (primary) hypertension

---

**Includes:** high blood pressure

hypertension (arterial) (benign) (essential) (malignant)(primary) (systemic)

**Excludes1:** hypertensive disease complicating pregnancy, childbirth and the puerperium (O10-O11, O13-O16)

**Excludes2:** essential (primary) hypertension involving vessels of brain (I60-I69)  
essential (primary) hypertension involving vessels of eye (H35.0-)

**Excludes2 note**

<b>I 10</b>	<b>Essential Hypertension</b>
<b>H35.033</b>	<b>Hypertensive Retinopathy, bilateral</b>

**Must code both and must be in this order per alphabetical index and tabular list instructions**

# Retinal Detachment Giant Tear–Right Eye

## Alphabetical Index

---

### Detachment

- retina (without retinal break) (serous) H33.2-
- - with retinal:
  - - - break H33.00-
  - - - - giant H33.03-



This would be starting point

### REMEMBER:

Very few listings under retina so must look under condition- detachment



# Age Related Macular Degeneration Alphabetic Index

---

## Macula

- cornea, corneal — *see Opacity, cornea*
- degeneration (atrophic) (exudative) (senile) — *see also Degeneration, macula*
- - hereditary — *see Dystrophy, retina*

## Degeneration, degenerative

- macula, macular (acquired) (age-related) (senile) H35.30
- - angioid streaks H35.33
- - atrophic age-related H35.31
- - congenital or hereditary — *see Dystrophy, retina*
- - cystoid H35.35-
- - drusen H35.36-
- - exudative H35.32
- - hole H35.34-
- - nonexudative H35.31
- - puckering H35.37-
- - toxic H35.38-

**Options H35.30 or H35.32 or H35.31  
Depending on type of ARMD**

# ARMD–Moderate Dry Right, Mild Left Tabular Look Up

## H35.3 Degeneration of macula and posterior pole

### H35.30 Unspecified macular degeneration

Age-related macular degeneration

### H35.31 Nonexudative age-related macular degeneration

Atrophic age-related macular degeneration

### H35.32 Exudative age-related macular degeneration

When you THOUGHT you had figured it out!  
NOT eye specific and NOT degree specific!

## H35.36 Drusen (degenerative) of macula

### H35.361 Drusen (degenerative) of macula, right eye

### H35.362 Drusen (degenerative) of macula, left eye

### H35.363 Drusen (degenerative) of macula, bilateral

### H35.369 Drusen (degenerative) of macula, unspecified eye

If only drusen you would  
code H35.36-

# Coding Guidelines for Glaucoma

## 1. Assigning Glaucoma Codes

---

Assign as many codes from category H40, Glaucoma, necessary to identify

- a) type of glaucoma
- b) affected eye
- c) glaucoma stage

## 2. Bilateral glaucoma with same type and stage

If code for bilateral glaucoma, report only bilateral code, with seventh character for stage

If no code for bilateral glaucoma, report only one code for type of glaucoma with seventh character for stage

# Coding Guidelines for Glaucoma

## 3. Bilateral glaucoma stage with different types or stages

- a) Each eye different type or stage, and the classification distinguishes laterality= one code for each eye
  
- a) Each eye different type, but classification does not distinguish laterality = one code for each type of glaucoma with seventh character for stage (subcategories H40.10, H40.11 and H40.20)
  
- b) Each eye has same type, but different stage, and classification does not distinguish laterality =

THEN

One code for type for each eye + seventh character for stage for each eye

# Coding Guidelines for Glaucoma

---

## 4. Indeterminate stage glaucoma

Assignment seventh character “4” for “indeterminate stage” based on clinical documentation – use when stage cannot be clinically determined

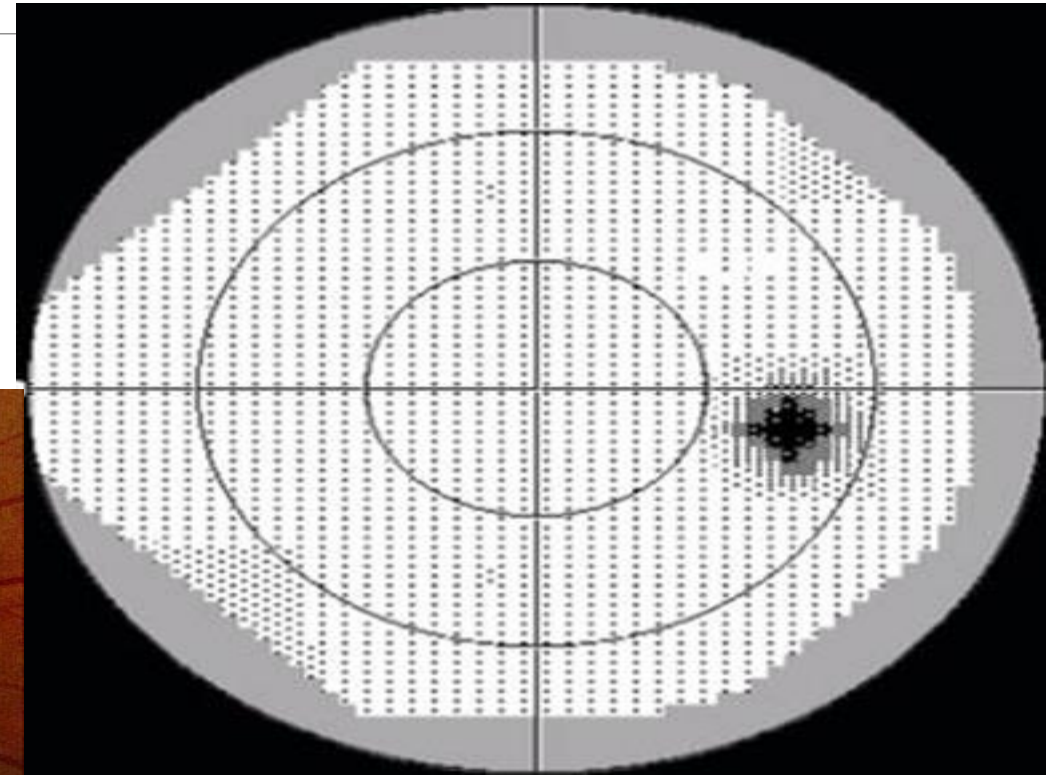
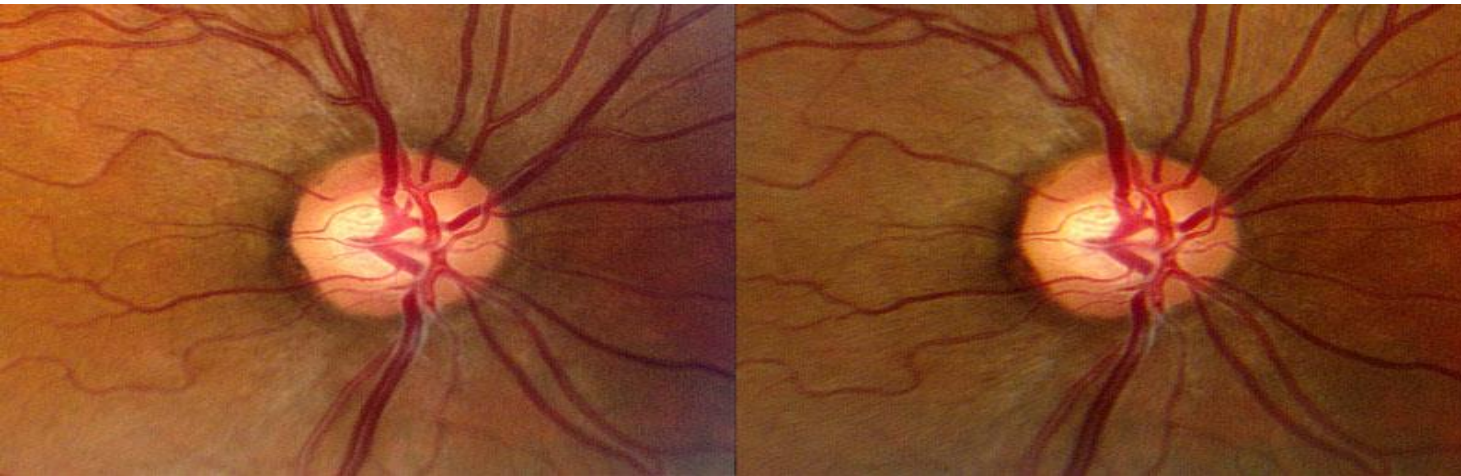
This seventh character “0”, unspecified, which should be assigned when no documentation regarding stage of glaucoma

**If you are not familiar with Glaucoma Staging- see link below**

[http://www.americanglaucomasociety.net/professionals/glaucoma\\_staging\\_codes\\_teaching\\_module/](http://www.americanglaucomasociety.net/professionals/glaucoma_staging_codes_teaching_module/)

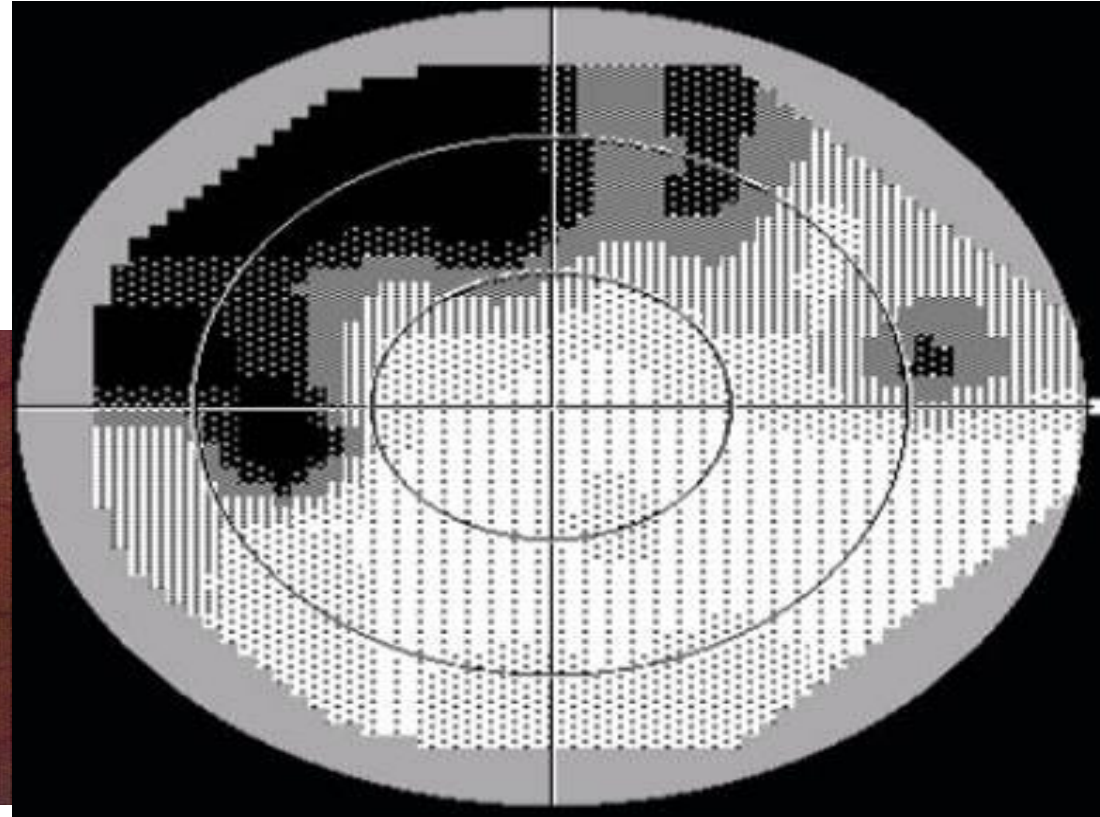
**MILD visual field abnormality**  
**(inner circle = 10 degrees, outer circle = 20 degrees)**  
**ICD 9 365.71**

---

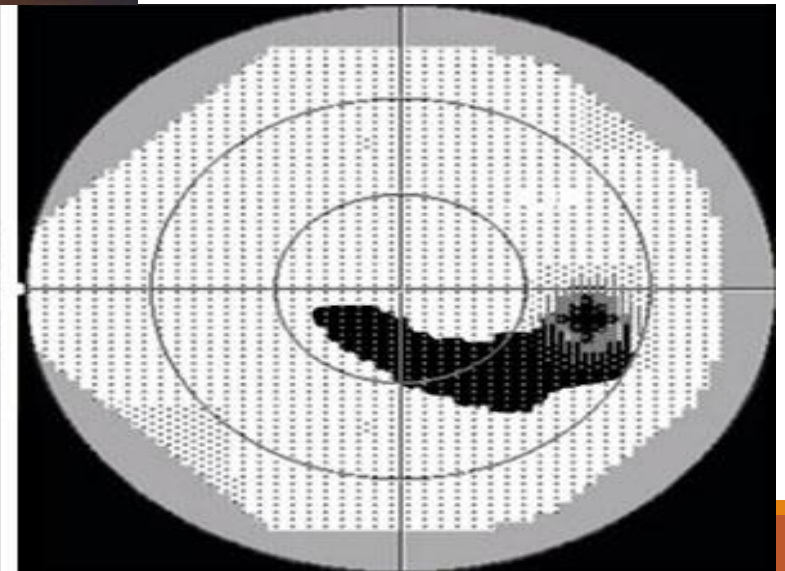
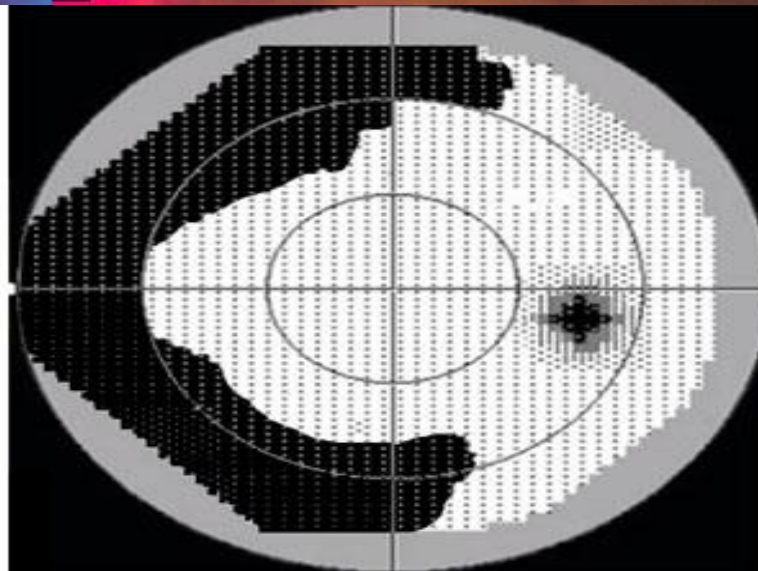
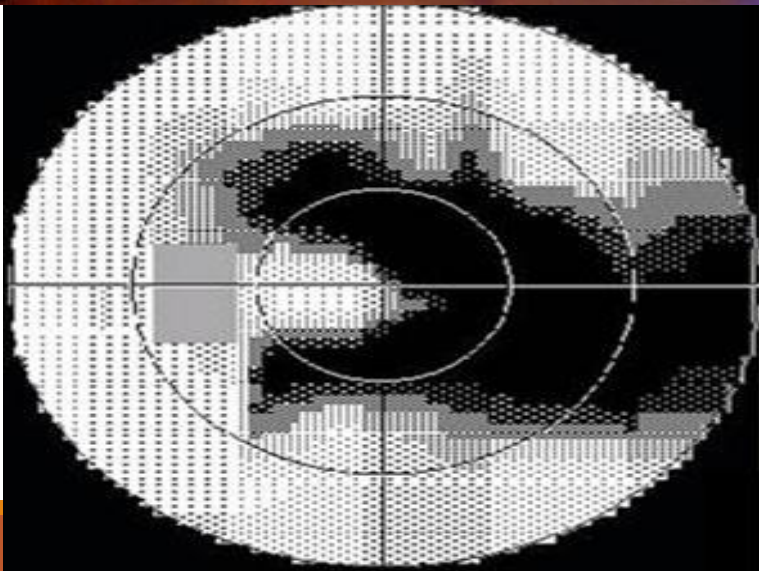
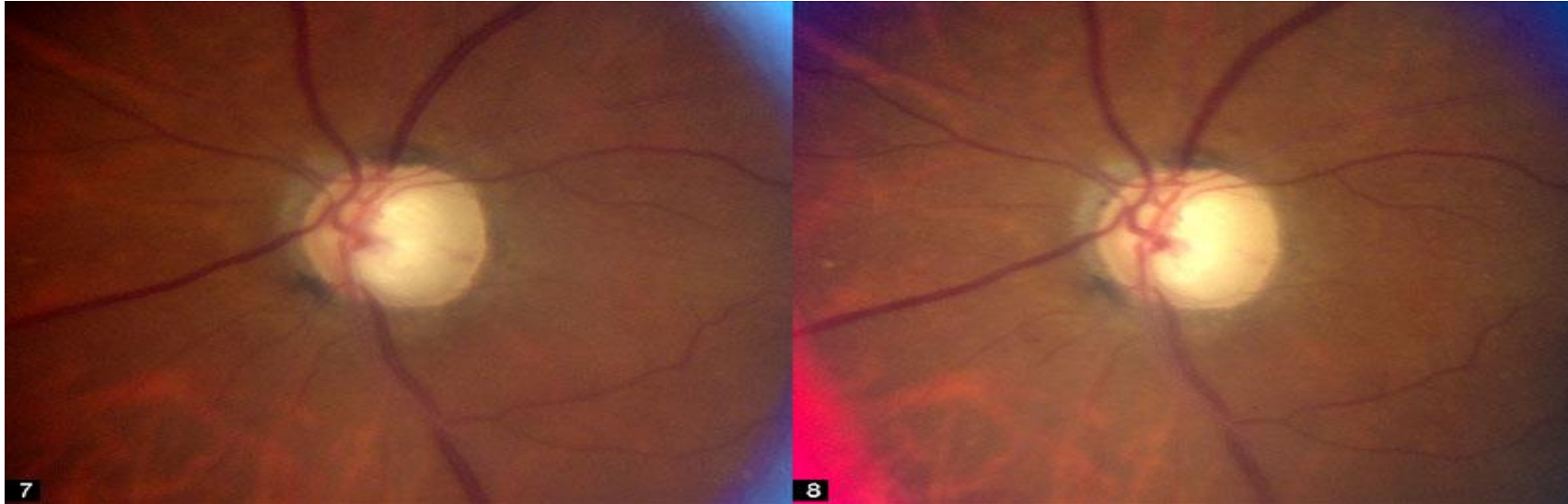


**MODERATE visual field abnormality**  
**(inner circle = 10 degrees, outer circle = 20 degrees)**  
**ICD 9 365.72**

---



**SEVERE visual field abnormality**  
**(inner circle = 10 degrees, outer circle = 20 degrees)**  
**ICD9 365.73**





# Coding Guidelines for Glaucoma

---

One of the following 7th characters is to be assigned to code H40.10 to designate the stage of glaucoma

- 0 - stage unspecified
- 1 - mild stage
- 2 - moderate stage
- 3 - severe stage
- 4 - indeterminate stage

Each glaucoma code that requires 7<sup>th</sup> character is clearly indicated in Tabular Listing


# Primary Open Angle Glaucoma OU

## Mild OD, severe OS

---

### Alphabetical Index

#### Glaucoma:

- open angle H40.10-
- - primary H40.11- 
- - - capsular (with pseudoexfoliation of lens) H40.14-
- - - low-tension H40.12-
- - - pigmentary H40.13-
- residual stage H40.15-

**Must go to section H40.11- in Tabular Listing**

# Primary Open Angle Glaucoma OU

## Mild OD, severe OS

Tabular Listing H40.11-  
This code is NOT per eye!!

### H40.11 Primary open-angle glaucoma

Chronic simple glaucoma

One of the following 7th characters is to be assigned to code H40.11 to designate the stage of glaucoma

- 0 - stage unspecified
- 1 - mild stage
- 2 - moderate stage
- 3 - severe stage
- 4 - indeterminate stage

Final Codes-must have BOTH codes AND X placeholder



H40.11X1 and H40.11X3

# Mixed Glaucoma Example

Low Tension Glaucoma, left eye, moderate stage  
Primary Open Angle Glaucoma, right eye, severe stage

## Alphabetical Index:

### Glaucoma:

- low tension —see *Glaucoma, open angle, primary, low-tension*
- - primary H40.11- 
- - - capsular (with pseudoexfoliation of lens) H40.14-
- - - low-tension H40.12- 
- - - pigmentary H40.13-
- - residual stage H40.15-

Must go to section H40.11 and H40.12- in Tabular Listing

# Mixed Glaucoma Example

Low Tension Glaucoma, left eye, moderate stage  
Primary Open Angle Glaucoma, right eye , severe stage

Tabular Listing 40.12- This code IS per eye!!

## H40.12 Low-tension glaucoma

One of the following 7th characters is to be assigned to each code in subcategory H40.12 to designate the stage of glaucoma

- 0 - stage unspecified
- 1 - mild stage
- 2 - moderate stage
- 3 - severe stage
- 4 - indeterminate stage

H40.121 Low-tension glaucoma, right eye

H40.122 Low-tension glaucoma, left eye

H40.123 Low-tension glaucoma, bilateral

H40.129 Low-tension glaucoma, unspecified eye

7<sup>th</sup> required ► H40.1222

This one already has 6 places so no "X" necessary

Final Codes Required  
H40.11x3 and H40.1222

# Diabetes and Diabetic Retinopathy Type II

## Alphabetic Index

### Diabetes, diabetic (mellitus) (sugar) E11.9

---

-With

• • •

-- cataract E11.36

• • •

- - retinopathy E11.319

- - - with macular edema E11.311

- - - nonproliferative E11.329

- - - - with macular edema E11.321

- - - - mild E11.329

- - - - - with macular edema E11.321

- - - - moderate E11.339

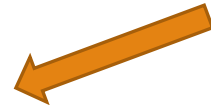
- - - - - with macular edema E11.331

- - - - severe E11.349

- - - - - with macular edema E11.341

- - - proliferative E11.359

- - - - with macular edema E11.351



#### NOTE:

None of codes are under Retina section  
Must look under Chapter 4  
Codes E8-E13

NOTE: divisions under DM + retinopathy

# Diabetes and Diabetic Retinopathy Type II

## Tabular Listing

### E11 Type 2 diabetes mellitus

---

**Includes:** diabetes (mellitus) due to insulin secretory defect  
diabetes NOS  
insulin resistant diabetes (mellitus)

**Use additional code to identify any insulin use (Z79.4)**

**Excludes1:** diabetes mellitus due to underlying condition (E08.-)  
drug or chemical induced diabetes mellitus (E09.-)  
gestational diabetes (O24.4-)  
neonatal diabetes mellitus (P70.2)  
postpancreatectomy diabetes mellitus (E13.-)  
postprocedural diabetes mellitus (E13.-)  
secondary diabetes mellitus NEC (E13.-)  
type 1 diabetes mellitus (E10.-)



Use Additional



Excludes1

Type I and Type II are separate sections  
“Use Additional Code” Note

# Diabetes and Diabetic Retinopathy Type II

## Tabular Listing

### **E11.3 Type 2 diabetes mellitus with ophthalmic complications**

#### **E11.31 Type 2 diabetes mellitus with unspecified diabetic retinopathy**

**E11.311** Type 2 diabetes mellitus with unspecified diabetic retinopathy with macular edema

**E11.319** Type 2 diabetes mellitus with unspecified diabetic retinopathy without macular edema

#### **E11.32 Type 2 diabetes mellitus with mild nonproliferative diabetic retinopathy**

Type 2 diabetes mellitus with nonproliferative diabetic retinopathy NOS

**E11.321** Type 2 diabetes mellitus with mild nonproliferative diabetic retinopathy with macular edema

**E11.329** Type 2 diabetes mellitus with mild nonproliferative diabetic retinopathy without macular edema

#### **E11.33 Type 2 diabetes mellitus with moderate nonproliferative diabetic retinopathy**

**E11.331** Type 2 diabetes mellitus with moderate nonproliferative diabetic retinopathy with macular edema

**E11.339** Type 2 diabetes mellitus with moderate nonproliferative diabetic retinopathy without macular edema



# Diabetes and Diabetic Retinopathy Type II

## Tabular Listing

**E11.34** Type 2 diabetes mellitus with severe nonproliferative diabetic retinopathy

**E11.341** Type 2 diabetes mellitus with severe nonproliferative diabetic retinopathy with macular edema

**E11.349** Type 2 diabetes mellitus with severe nonproliferative diabetic retinopathy without macular edema

**E11.35** Type 2 diabetes mellitus with proliferative diabetic retinopathy

**E11.351** Type 2 diabetes mellitus with proliferative diabetic retinopathy with macular edema

**E11.359** Type 2 diabetes mellitus with proliferative diabetic retinopathy without macular edema

**E11.36** Type 2 diabetes mellitus with diabetic cataract



**E11.39** Type 2 diabetes mellitus with other diabetic ophthalmic complication



Use additional code to identify manifestation, such as:  
diabetic glaucoma (H40-H42)



**Each type of retinopathy has it's own code**  
**Non-proliferative - Mild Moderate Severe and Proliferative**  
**With and without Macular Edema**

# Diabetes and Diabetic Retinopathy Type II

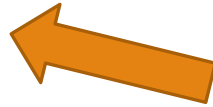
## Tabular Listing

**Example: IDDM Type II with moderate non-proliferative retinopathy without macular edema**

**E11.33** Type 2 diabetes mellitus with moderate nonproliferative diabetic retinopathy

**E11.331** Type 2 diabetes mellitus with moderate nonproliferative diabetic retinopathy with macular edema

**E11.339** Type 2 diabetes mellitus with moderate nonproliferative diabetic retinopathy without macular edema



**Code as:**

**E11.339 and Z79.4**

**Remember “Use Additional Code” Note for Insulin use**

# Ocular Injury Coding Principles

## External Cause, Activity, Place of Occurrence

---

1. External causes of morbidity codes never sequenced as first diagnosis
2. External cause code used for length of treatment with appropriate 7<sup>th</sup> character
3. Assign as many external cause codes as necessary
4. Combination external cause codes should correspond to sequence of events without regard for which caused most serious injury
  - fall causing a strike against something injury

# Ocular Injury Coding Principles

## External Cause, Activity, Place of Occurrence Secondary Codes

---

1. Place of occurrence (Y92)

Location of the patient at time of injury or other condition

2. Activity code (Y93)

Describe activity at time of injury or other health condition

3. External cause status code (Y99)

Military, Civilian Work, Volunteer, Other Work, Not specified

**Place of occurrence, activity, and external cause status codes are sequenced after main external cause code(s)**

# Ocular Injury Coding Principles

## External Cause, Activity, Place of Occurrence

---

There is no **national requirement for mandatory ICD-10-CM external cause code reporting**. Unless a provider is subject to a state-based external cause code reporting mandate or these codes are required by a particular payer, reporting of ICD-10-CM codes in Chapter 20, External Causes of Morbidity, is not required.

In the absence of a mandatory reporting requirement, **providers are encouraged to voluntarily report external cause codes**, as they provide valuable data for injury research and evaluation of injury prevention strategies.

# Corneal Abrasion, right eye, central–Tree limb Home Yard Work – No fall involved

---

Chief complaint: “My right eye hurts”

Cutting tree limbs in my yard this morning when I bumped into a branch. Since then, my right eye has been tearing and watering. Sensitive to light and painful.

Finding: Corneal abrasion of central cornea in right eye

Diagnosis: Corneal abrasion OD

**But how do we code this injury?**

# Corneal Abrasion, right eye, central–Tree limb

---

## Alphabetic Index

Cornea – see condition

...

Abrasion T14.8

...

-cornea S05.0-



**Go to S05.0- section in Chapter 19**

# Corneal Abrasion, right eye, central–Tree limb

## Chapter 19

Read Notes at beginning of chapter

Injury, poisoning and certain other consequences of external causes (S00-T88)

Note: Use secondary code(s) from Chapter 20, External causes of morbidity, to indicate cause of injury.

Use additional code to identify any retained foreign body, if applicable (Z18.-)

Note: The chapter uses the S-section for coding different types of injuries related to single body regions

### S05 Injury of eye and orbit

Includes: open wound of eye and orbit

Excludes2: 2nd cranial [optic] nerve injury (S04.0-)

3rd cranial [oculomotor] nerve injury (S04.1-)

open wound of eyelid and periocular area (S01.1-)

orbital bone fracture (S02.1-, S02.3-, S02.8-)

superficial injury of eyelid (S00.1-S00.2)

NOTE: DIFFERENT 7<sup>th</sup> character than glaucoma!!

The appropriate 7th character is to be added to each code from category S05



# Corneal Abrasion, right eye, central–Tree limb

**S05.0 Injury of conjunctiva and corneal abrasion without foreign body**

Excludes1: foreign body in conjunctival sac (T15.1)  
foreign body in cornea (T15.0)

**S05.00 Injury of conjunctiva and corneal abrasion without foreign body, unspecified eye**

**S05.01 Injury of conjunctiva and corneal abrasion without foreign body, right eye** ←

**S05.02 Injury of conjunctiva and corneal abrasion without foreign body, left eye**

**S05.01 is part of code but need 7<sup>th</sup> character AND external cause**

The appropriate 7th character is to be added to each code from category S05

**A - initial encounter**

**D - subsequent encounter**

**S - sequela**

# Corneal Abrasion: right eye, central–Tree limb

---

## Diagnosis for initial encounter for injury

Code is S05.01XA

## Diagnosis for subsequent encounter for injury

Code is S05.01XD

## Diagnosis for sequela to original injury

Code is S05.01XS

Now find EXTERNAL CAUSE for injury

# Corneal Abrasion: right eye, central–Tree limb

---

## But First ► Sequela (Late Effects)

Residual effect (condition produced) after acute phase of illness or injury

No time limit on when sequela code can be used

may be apparent early or may occur months or years later

Coding of sequela generally requires two codes sequenced in following order:

1. Condition or nature of sequela first
2. Sequela code is sequenced second

**Recurrent corneal erosion following an initial abrasion  
H18.831 then S05.01xS**

# Corneal Abrasion: right eye, central–Tree limb

---

Use secondary code(s) from Chapter 20-  
(External causes of morbidity) to indicate cause of injury when code  
of condition requires

**When review all index in Chapter 20  
MAYBE:**

Y21-Y33      [Event of undetermined intent](#)

**Y29 Contact with blunt object, undetermined intent**

The appropriate 7th character is to be added to code Y29

A - initial encounter

D - subsequent encounter

S - sequela

**Y29 → Y29.XXXA, Y29.XXXD, Y29.XXXS**

# Corneal Abrasion: right eye, central–Tree limb

W00-X58 [Other external causes of accidental injury](#)

---

## **W22 Striking against or struck by other objects**

**Excludes1:** striking against or struck by object with subsequent fall (W18.09)

The appropriate 7th character is to be added to each code from category W22

A - initial encounter

D - subsequent encounter

S - sequela

## **W22.8 Striking against or struck by other objects**

Striking against or struck by object NOS

**Excludes1:** struck by thrown, projected or falling object (W20.-)

W22.8 → W22.8XXA, W22.8XXD, W22.8XXS

# Corneal Abrasion: right eye, central–Tree limb

S05.01XA and W22.8XXA *or* Y29.XXXA

Second code depends on whether you choose Bumped by or Striking against

OR is it?

Contact with nonvenomous plant thorns and spines and sharp leaves??

W60.XXXA, W60.XXXD, W60.XXXS

MAYBE...

# Corneal Abrasion, right eye, central–Tree limb Home Yard Work – No fall involved

**Find Place of Occurrence Code - Y92**

## **Y92 Place of occurrence of the external cause**

The following category is for use, when relevant, to identify the place of occurrence of the external cause. Use in conjunction with an activity code.

Place of occurrence should be recorded only at the initial encounter for treatment

### **Y92.0 Non-institutional (private) residence as the place of occurrence of the external cause**

**Excludes1:** abandoned or derelict house (Y92.89)

home under construction but not yet occupied (Y92.6-)

institutional place of residence (Y92.1-)

**Y92.00 Unspecified non-institutional (private) residence as the place of occurrence of the external cause**

**Y92.007 Garden or yard of unspecified non-institutional (private) residence as the place of occurrence of the external cause**

**S05.01XA and W22.8XXA and Y92.007**  
**(Injury) (External Cause) (Place)**

# Corneal Abrasion, right eye, central–Tree limb Home Yard Work – No fall involved

Activity Code- what were they doing at time of injury/condition  
Use with External Cause Code and Place of Occurrence Code

## Y93 Activity codes

**Note:** Category Y93 is provided for use to indicate the activity of the person seeking healthcare for an injury or health condition, such as a heart attack while shoveling snow, which resulted from, or was contributed to, by the activity. These codes are appropriate for use for both acute injuries, such as those from chapter 19, and conditions that are due to the long-term, cumulative effects of an activity, such as those from chapter 13. They are also appropriate for use with external cause codes for cause and intent if identifying the activity provides additional information on the event. These codes should be used in conjunction with codes for external cause status (Y99) and place of occurrence (Y92).



# Corneal Abrasion, right eye, central–Tree limb Home Yard Work – No fall involved

**Y93.H Activities involving exterior property and land maintenance, building and construction**

**Y93.H1 Activity, digging, shoveling and raking**

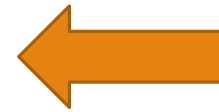
Activity, dirt digging

Activity, raking leaves

Activity, snow shoveling

**Y93.H2 Activity, gardening and landscaping**

Activity, pruning, trimming shrubs, weeding



**Y93.H3 Activity, building and construction**

**Y93.H9 Activity, other involving exterior property and land maintenance, building and construction**

The record SHOULD indicate specifics → pruning trees

Activity Code = Y93.H2

S05.01XA + W22.8XXA + Y92.007 + Y93.H2

# Corneal Abrasion, right eye, central–Tree limb Home Yard Work – No fall involved

## Y99 External cause status

**Note:** A single code from category Y99 should be used in conjunction with the external cause code(s) assigned to a record to indicate the status of the person at the time the event occurred.

This section is divided into:  
Civilian Work related  
Military related  
Volunteer related  
Other related (leisure, student, etc)  
Not specified related

Again, while example does not indicate external cause, the Record should

# Corneal Abrasion, right eye, central–Tree limb Home Yard Work – No fall involved

## Y99 External cause status

**Note:** A single code from category Y99 should be used in conjunction with the external cause code(s) assigned to a record to indicate the status of the person at the time the event occurred.

### Y99.0 Civilian activity done for income or pay

Civilian activity done for financial or other compensation

**Excludes1:** military activity (Y99.1)  
volunteer activity (Y99.2)

### Y99.1 Military activity

**Excludes1:** activity of off duty military personnel (Y99.8)

### Y99.2 Volunteer activity

**Excludes1:** activity of child or other family member assisting in compensated work of other family member (Y99.8)

### Y99.8 Other external cause status

Activity NEC

Activity of child or other family member assisting in compensated work of other family member

Hobby not done for income

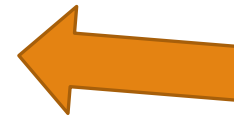
Leisure activity

Off-duty activity of military personnel

Recreation or sport not for income or while a student

Student activity

**Excludes1:** civilian activity done for income or compensation (Y99.0)  
military activity (Y99.1)



Y99.8 is the choice

### Y99.9 Unspecified external cause status

# Corneal Abrasion, right eye, central–Tree limb Home Yard Work – No fall involved

## Final Code Choices for Initial Encounter

---

- S05.01XA** Actual injury – corneal abrasion OD
- W22.8XXA** External cause- striking against object  
(or Y29.XXXA blunt object? or W60.XXXA- nonvenom plant)
- Y92.007** Garden/yard private residence
- Y93.H2** Activity, gardening and landscaping
- Y99.8** Other external cause- leisure



**INITIAL ENCOUNTER ONLY**

## Final Code Choices for Subsequent Encounter(s)

- S05.01XD**
- W22.8XXD**

# Take Home Messages

1

- Improve documentation to include specific details

2

- Ensure your ICD-9-CM coding is very specific

3

- Thinking about encounters in terms of ICD-10-CM

4

- Practice coding encounters with ICD-10-CM

# Take Home Messages

5

- Review of office procedures for ICD-10-CM needs

6

- Discussions ICD-10-CM preparation with vendors
  - EHR, clearinghouses, insurances

7

- Begin educating yourself

8

- Begin educating staff

9

- Begin saving \$\$ in case payments are slow

10

- Use caution with ICD-9-CM ► ICD-10-CM conversion tables-
  - Not always as specific as necessary

# ICD-10-CM Resources

American Optometric Association

[www.aoa.org/coding](http://www.aoa.org/coding)

---

**AOA Coding Today**

<http://aoa.codingtoday.com/>

**CDC ICD-10-CM Official USA site**

<http://www.cdc.gov/nchs/icd/icd10cm.htm>

2016 release of ICD-10-CM at bottom of page has all the downloads

**CMS ICD-10-CM information**

<https://www.cms.gov/Medicare/Coding/ICD10/index.html>

**X World Health X but Use for general training only**

<http://apps.who.int/classifications/apps/icd/icd10training>

# QUESTIONS???

---

**Submit any and all ICD-10-CM questions and any coding questions to:**

<https://www.aoa.org/ask-the-coding-experts>



Now it is ALL CLEAR to Hank! And YOU, too!



**RIGHT?**

And, like Hank,  
you CAN conquer  
this Mountain!

But you have to  
stay on top of it!!



**THANK YOU!!!!**

---